



OKA ACCESSORIES





OKA ACCESSORIES

CONTENT

- Company Background
- Our Customers
- Infrastructure
- Quality and Ethics
- Summary



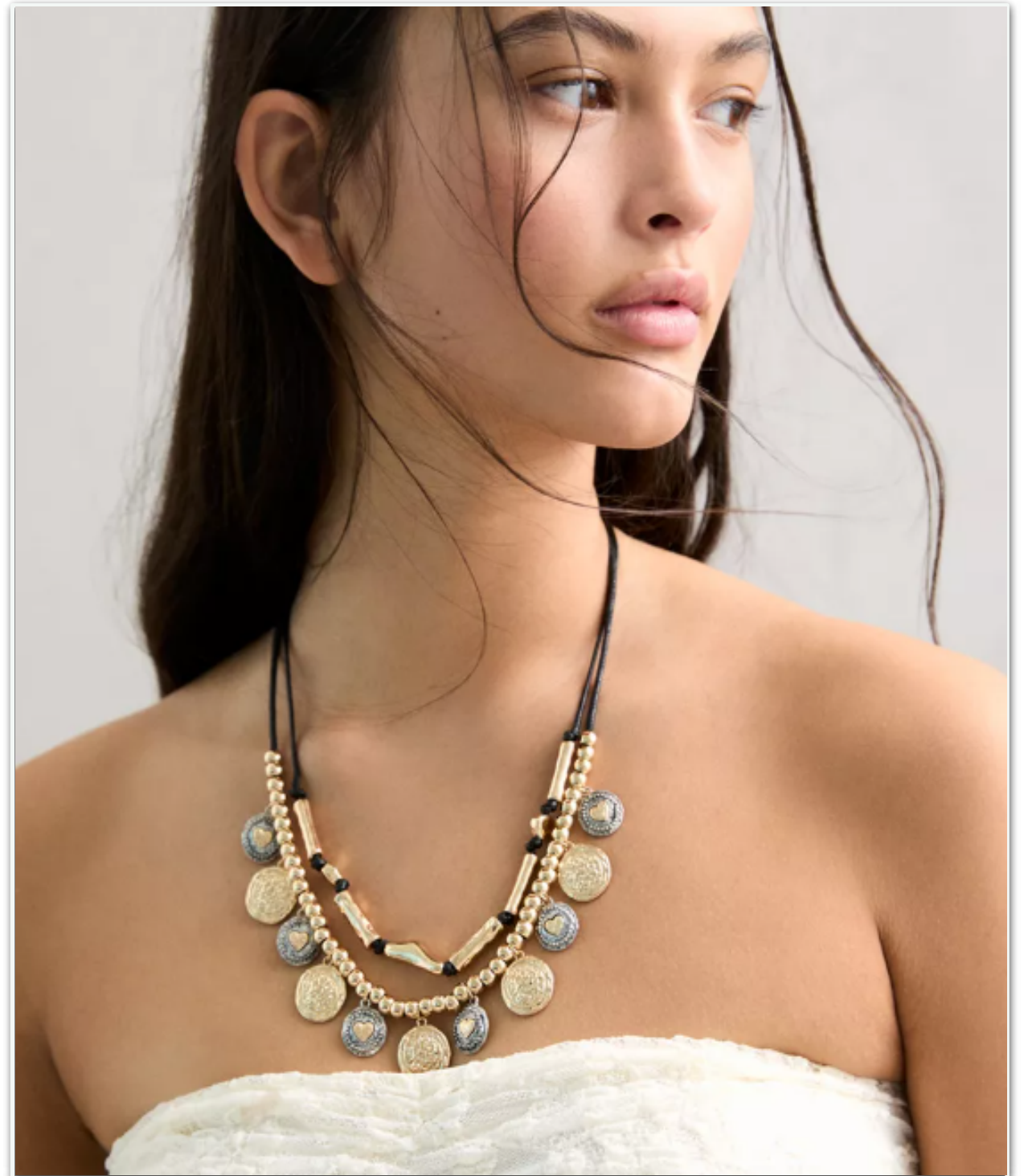
ABOUT OKA ACCESSORIES

OKA Accessories was established in 2013 and has worked with many of the leading UK and European retailers.

Before establishing their own factory the team had over 15 years experience working in the jewellery and accessories industry, working for leading Korean factories and UK suppliers.

OKA Accessories have offices in Qingdao and Yiwu and a design office based in London.

We pride ourselves at producing design led product at the most competitive prices and of the highest quality.



Factory Address	Building A-3-8, Qingdao International Garment Industry, Jiujiang Road No 17, Tongji New Economic District, Jimo, Qingdao, China
Office Locations	Qingdao/Yiwu/London
Production Capacity	5,000,000-7,000,000 per year
Sampling Capacity	1000 samples per month
Number of Employees	50+

OUR CUSTOMERS

PULL&BEAR

TALLY WEIJL

PARFOIS

PRETTYLITTLETHING

 **LANDMARK
GROUP**

URBAN OUTFITTERS

OYSHO

orsay

HEMA

M O H I T O

UTERQÜE

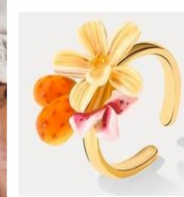
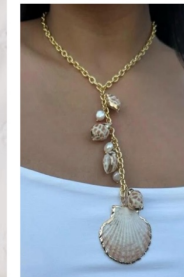
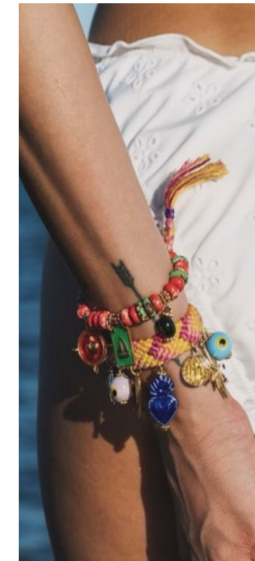
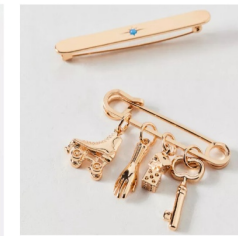
DESIGN

Our design team is based in Central London. They have over 12 years experience in the industry, working with many of the leading retailers from the UK, US and Europe.

Our team travels widely for inspiration and uses this when creating trends for the season and for each customer. They translate these into new designs using both CAD and hand making skills.

We also have a team of designers based in our Qingdao office who have daily access to the component markets in Qingdao to source the newest materials and components to use in all development.

Oka Accessories



AW25/26



SAMPLING

We have a team of 10 makers in our sampling room, who make approximately 1000 samples per month.

As well as visiting Qingdao market daily, we also visit Yiwu market daily for component and material sourcing.

PRODUCTION

We have done production for many of the biggest retailers and have wide experience in working in the fast pace environment of fashion jewellery and hair accessories. We have a lead time of 5-6 weeks from approval stage to shipment and our production capacity is 5,000,000 - 7,000,000 units per year. 97% of our shipments are on time.

CASTING

We have an in-house team of 5 mould makers and a casting room allowing us to have a fast turnaround of cast metal components.



QC INSPECTION

We have a full-time in-house QC who inspects 100% of shipments, with goods only released for delivery once management have signed off the inspection report.

We also have a very high pass rate of 98% for lab testing of jewellery, which ensures our product is always compliant to latest legislation and regulations meeting European and US standards.

AUDITS

We are regularly audited and have audits in place for Sedex, Inditex, Primark and Avon.



OKA ACCESSORIES

SUMMARY

OKA Accessories has continually delivered fast fashion jewellery and hair accessories at a competitive price to many of the leading global retailers.

With a highly experienced management and design team, we believe that we are one of the strongest factories to help support all your jewellery and hair accessory needs.

Please contact us on below emails:

Vice president - Anna Cao anna@qdoka.com

